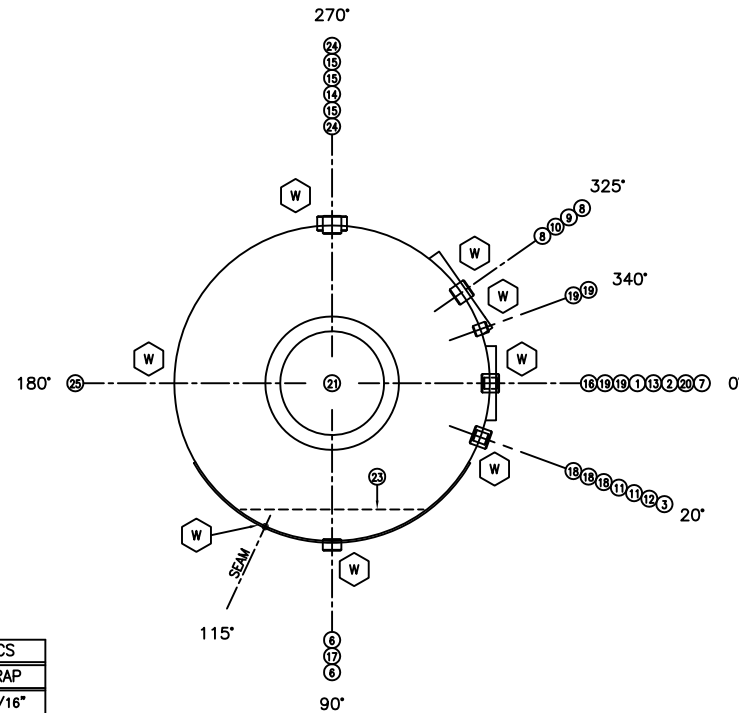
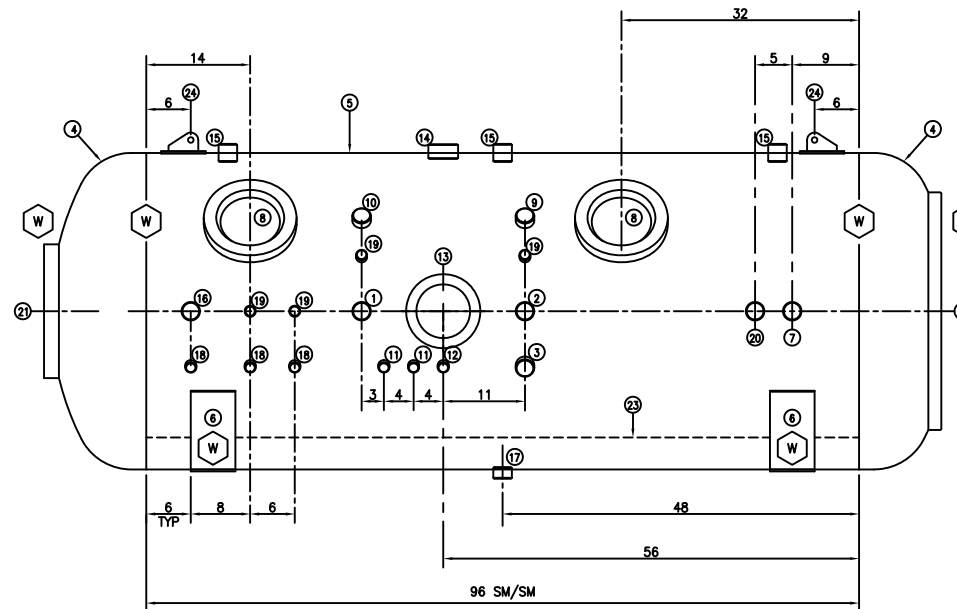


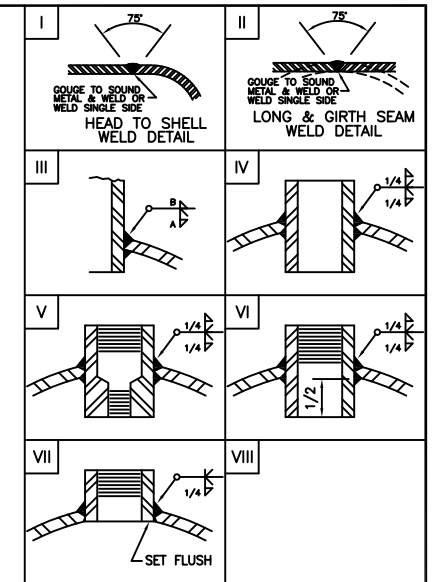
TOP VIEW



END VIEW



SIDE VIEW



- NOTES:
1. Outside projection in the nozzle schedule is from the vessel O.D. unless otherwise noted.
 2. Inside projection shown in the nozzle schedule is minimum only.
 3. Unless otherwise noted, all tail dimensions are in inches and from reference line.
 4. All nozzles shall be adequately protected and covered for shipment.
 5. Flange bolt holes to straddle vessel centerlines unless otherwise noted.
 6. Hydro test with rust preventative.
 7. Vessel to be PVHO-1, FULL X-ray, PT or MT Root.
 8. Shell and Heads mat'l to be Normalized, Full Killed, Fine grain practice.

TABLE OF ARCS	
DEG.	STRAP
15°	5 9/16"
20°	7 7/16"
25°	9 1/4"
35°	13"
55°	20 3/8"

NAT'L. BD. NO. 2674

Certified by:
PRESSURE PRODUCTS, INC.
FORT WORTH, TEXAS

W 100 PSI AT 120 F.
MAX. ALLOW. WORKING PRESSURE

PVHO-1 20 F. AT 120 PSI
MIN. DESIGN METAL TEMP.

RT-1 03115 2003
SERIAL NO. YEAR BUILT

42" PRESSURE VESSEL

PARTIAL DESCRIPTION

SPECIFICATIONS

YEAR BUILT	2003	TAG/MODEL NUMBER	4200
SERIAL NO.	03115	NATIONAL BD. NO.	2674
DESIGN PRESSURE INTERNAL	100 PSIG @ TEMP. 20/120 °F MIN/MAX		
DESIGN PRESSURE EXTERNAL	— PSIG @ TEMP. — °F MIN/MAX		
HYDRO PRESSURE INTERNAL	130 J.E. LONG SEAMS 100 (FULL)		
CORROSION ALLOWANCE	0.0625 J.E. ROUND SEAMS 100 (FULL)		
RADIOGRAPHY	RT-1 STRESS RELIEVE —		
FLANGE RATING	— COUPLING RATING —		
SHELL MATL. SPEC.	SA516-70N HEAD MATL. SPEC. SA516-70N		
FLANGE MATL. SPEC.	SA350-LF2 CPLG. MATL. SPEC. SA479-316		
PIPE MATL. SPEC.	— BW FIT. MATL. SPEC. —		
REPAD MATL. SPEC.	— STRUC. MATL. SPEC. —		
RF GSK. MATL. SPEC.	304 SS FLG. STUD SPEC. —		
RJ GSK. MATL. SPEC.	— FLG. NUT SPEC. —		
EMPTY WEIGHT	5,700 LBS. FULL LIQUID WEIGHT —		
RF GSK. DESC.	1/8" SPIRAL WOUND METAL/COMP.		
RJ GSK. DESC.	—		
WELD PROCEDURE	B,8,10		
INSULATION DESC.	NO		
INSPECTION BY	IB&MR		
CONSTRUCTION CODE	ASME SEC. VIII DIV. 1, 2001 ED. 2002 ADD.		
EXT. SURFACE TREATMENT	N/A		
INT. SURFACE TREATMENT	CLEAN, FREE FROM OIL, SLAG, GRIT, ETC.		

MARK NO.	SERVICE	SIZE	RATING	TYPE	BORE	WALL	LG. NECK	MAT'L.	O.S.	I.S.	PROJECTION	WELD DETAIL	A	B
22	1	MANWAY	28.00	—	FORGING	28.00	2.000	3.0000	SA350-LF2	—	—	—	—	—
21	1	VIEW PORT	12.00	—	FORGING	15.10	1.450	4.0000	SA350-LF2	—	—	—	—	—
20	1	SPARE	1.00	—	THR' D	1.24	0.625	2.3750	SA479-316	—	—	IV	—	0.2500 0.2500
19	4	SPARE	0.50	—	THR' D	0.69	0.402	1.8750	SA479-316	—	—	IV	—	0.2500 0.2500
18	3	SPARE	0.25	—	THR' D	0.39	0.552	1.8750	SA479-316	—	—	IV	—	0.2500 0.2500
17	1	DRAIN	1.00	—	THR' D	1.24	0.625	1.5625	SA479-316	REM.	FLUSH	VII	—	0.2500 —
16	1	RELIEF	1.00	—	THR' D	1.24	0.625	2.3750	SA479-316	—	—	IV	—	0.2500 0.2500
15	3	FIRE SUPP.	1.00	—	THR' D	1.24	0.625	2.4375	SA479-316	—	—	V	—	0.2500 0.2500
14	1	LIGHT	2.00	—	THR' D	2.42	0.786	2.0000	SA479-316	—	—	VI	—	0.2500 0.2500
13	1	PENETRATOR	10.00	—	FORGING	7.25	1.375	2.7500	SA350-LF2	—	—	—	—	—
12	1	HAND LINE	0.50	—	THR' D	0.68	0.402	1.8750	SA479-316	—	—	IV	—	0.2500 0.2500
11	2	FIRE SUPP.	0.25	—	THR' D	0.39	0.552	1.8750	SA479-316	—	—	IV	—	0.2500 0.2500
10	1	GAUGE	0.25	—	THR' D	0.39	0.552	1.8750	SA479-316	—	—	IV	—	0.2500 0.2500
9	1	OX MONITOR	0.25	—	THR' D	0.39	0.552	1.8750	SA479-316	—	—	IV	—	0.2500 0.2500
8	2	VIEW PORT	8.00	—	FORGING	10.00	1.250	3.2500	SA350-LF2	—	—	—	—	—
7	1	ELECTRICAL	1.00	—	THR' D	1.24	0.625	2.3750	SA479-316	—	—	IV	—	0.2500 0.2500
3	1	S. EXHAUST	1.00	—	THR' D	1.24	0.625	2.3750	SA479-316	—	—	IV	—	0.2500 0.2500
2	1	EXHAUST	1.00	—	THR' D	1.24	0.625	2.3750	SA479-316	—	—	IV	—	0.2500 0.2500
1	1	SUPPLY	1.00	—	THR' D	1.24	0.625	2.3750	SA479-316	—	—	IV	—	0.2500 0.2500

REVISIONS				DESCRIPTION
NO.	DESCRIPTION	DATE	BY	
0	ISSUE FOR CONSTRUCTION	05/08	CVN	
1	EDITORIAL CHANGED	06/11	CVN	
2	REVISED NAMEPLATE	07/16	CVN	
3	EDITORIAL CHANGED	07/24	CVN	
4	EDITORIAL CHANGED	08/07	CVN	

DESCRIPTION: 42" ID x 96" SM/SM

CUSTOMER: JEM

SCALE: 1:0

P.O. NO. P03-030-0303

DRAWN C/VN 05/08/03 JOB NO. 03-014

JEM 05/08/03 DWG. NO. D2432-000 REV. 4