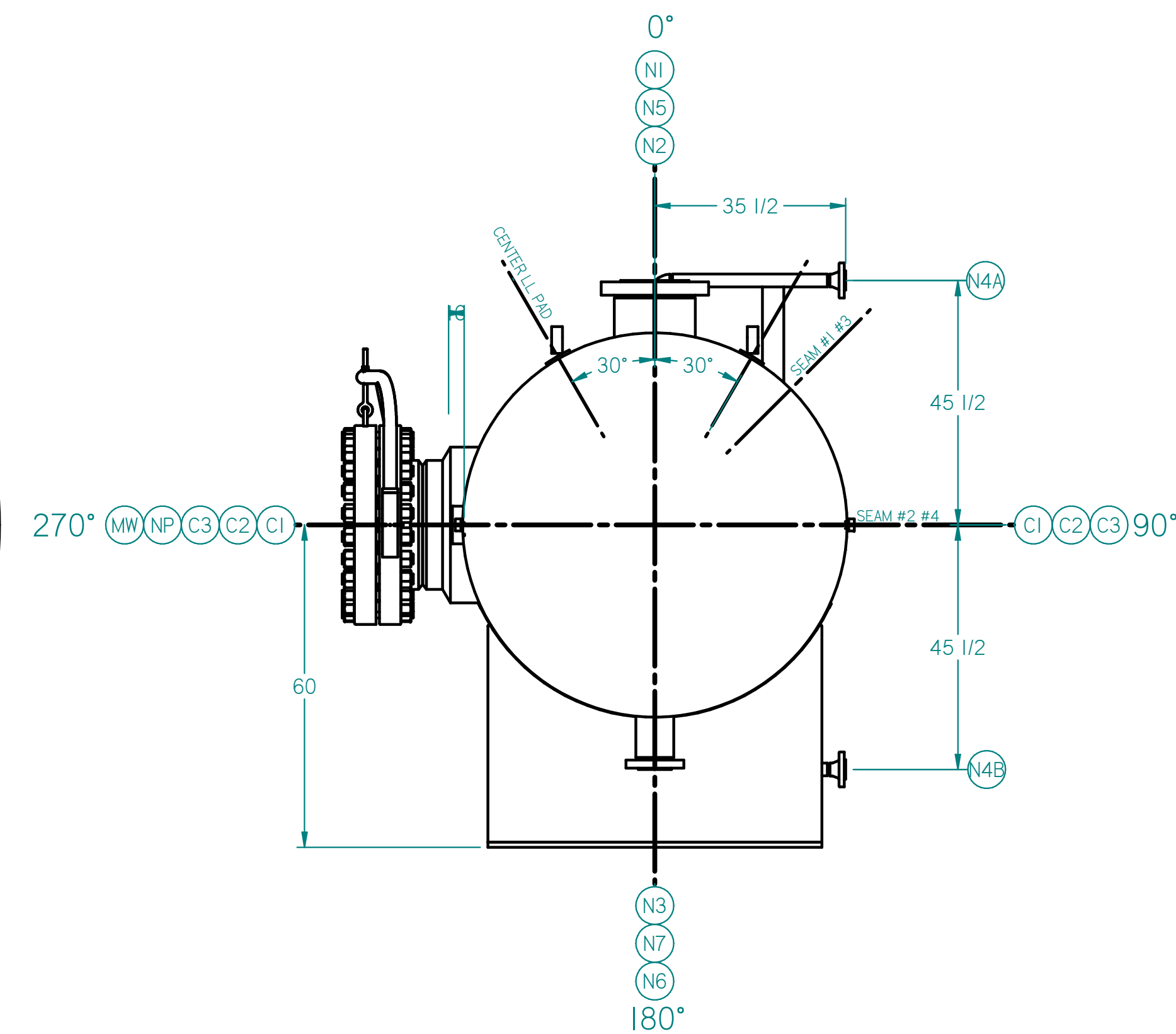
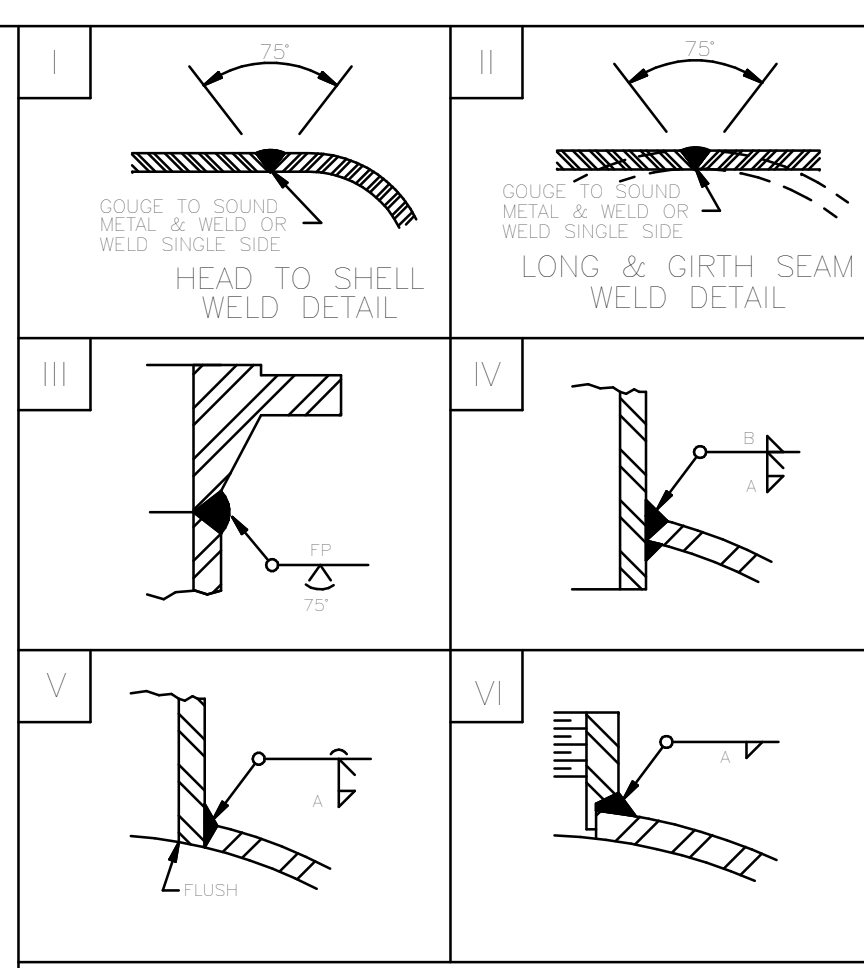


ELEVATION



ORIENTATION



- NOTES:
- Parts and material for one (1) vs. (1) vs. req. d.
  - Flange bolt holes to straddle vessel centerlines unless otherwise noted.
  - 1/4" NPT telltale hole in lifting lugs.
  - Outside projection shown in the nozzle schedule is from the vessel O.D. unless otherwise noted.
  - Inside projection shown in the nozzle schedule is minimum only.
  - All tail dimensions are from the REFERENCE LINE.
  - All nozzles shall be adequately protected and covered for shipment. All screwed connections shall be retapped.
  - All nozzles shall have 1/8" radius both sides of wall on internal projection.
  - Hydrotest with rust preventive.

3628

Certified by:  
**PRESSURE PRODUCTS, INC.**  
FORT WORTH, TEXAS

RT-1 1440 PSI AT 125 °F  
MAX. ALLOW. WORKING PRESS.

HT - PSI AT - °F  
MAX. ALLOW. EXT. WORKING PRESS.

-20 °F AT 1440 PSI  
MIN. DESIGN METAL TEMP.

11121 SERIAL NO. 20 11 YEAR BUILT

66" ID SLUG CATCHER  
TAG 70102

PARTIAL DESCRIPTION

SPECIFICATIONS

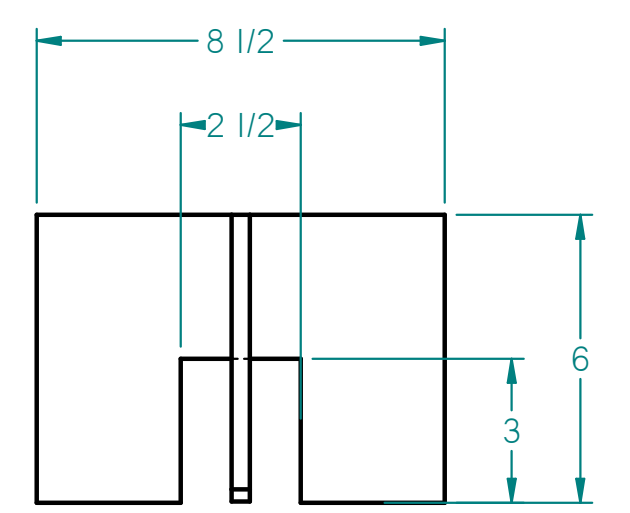
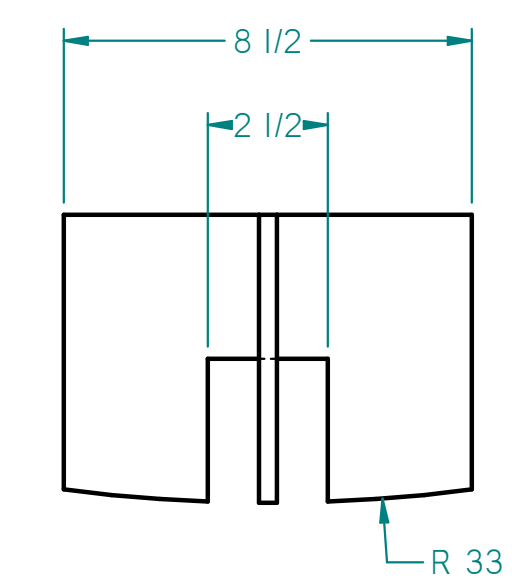
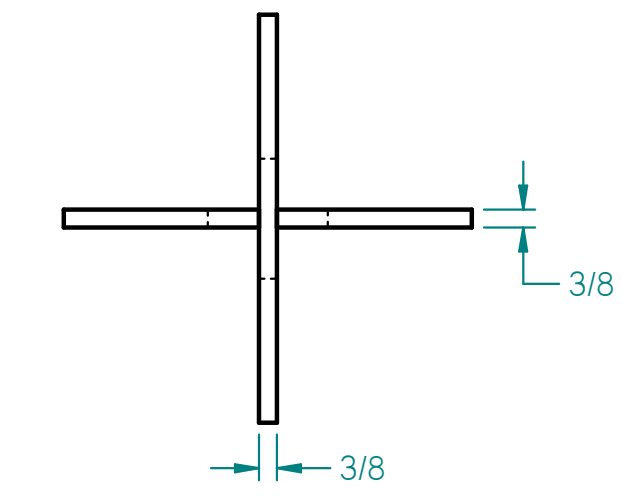
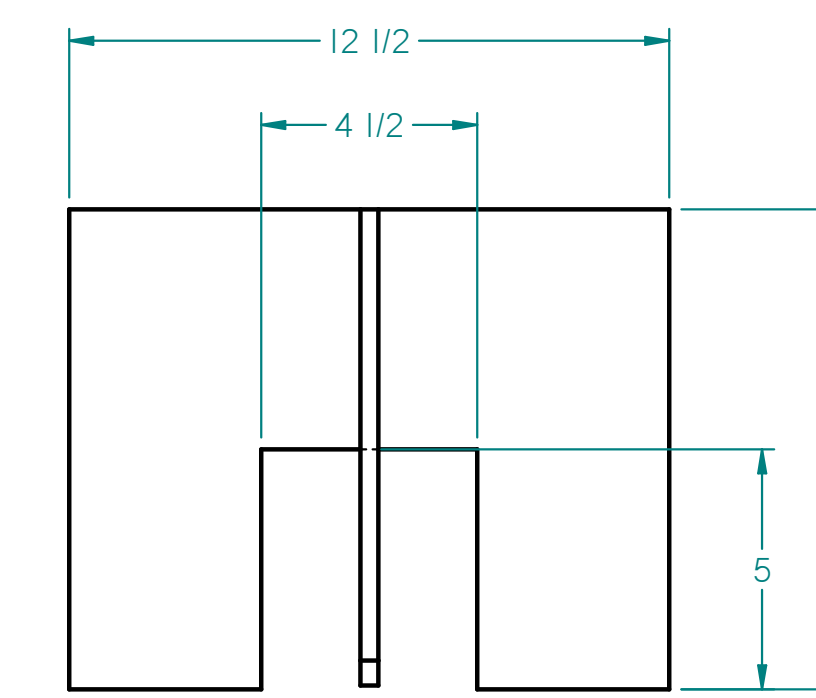
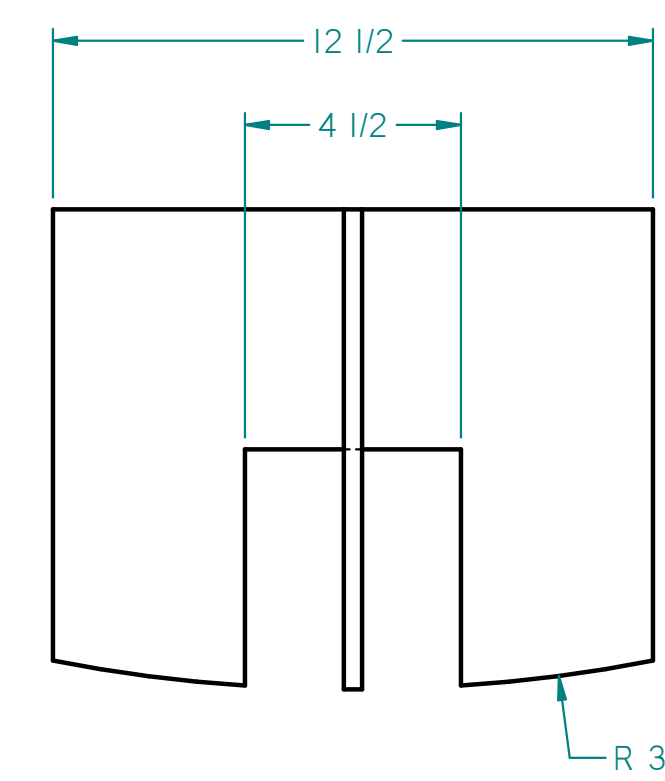
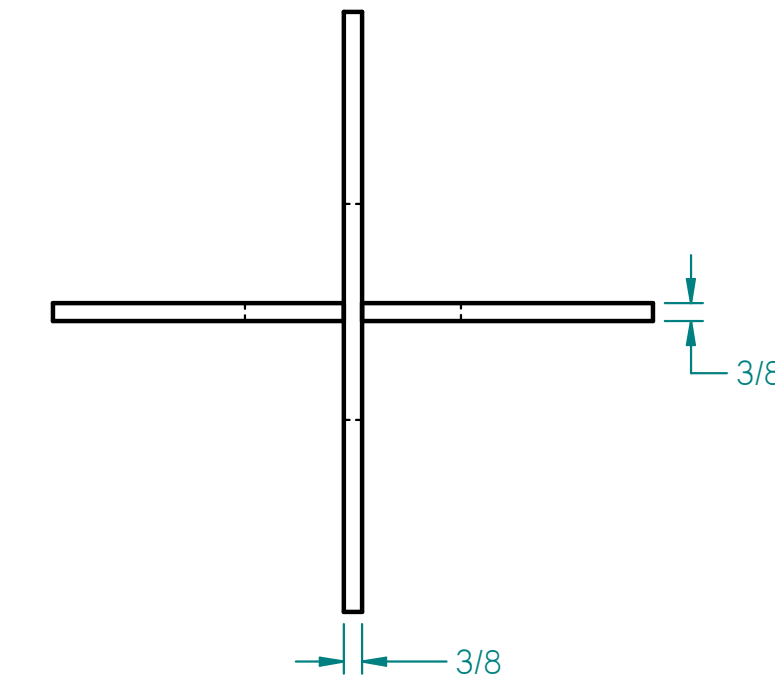
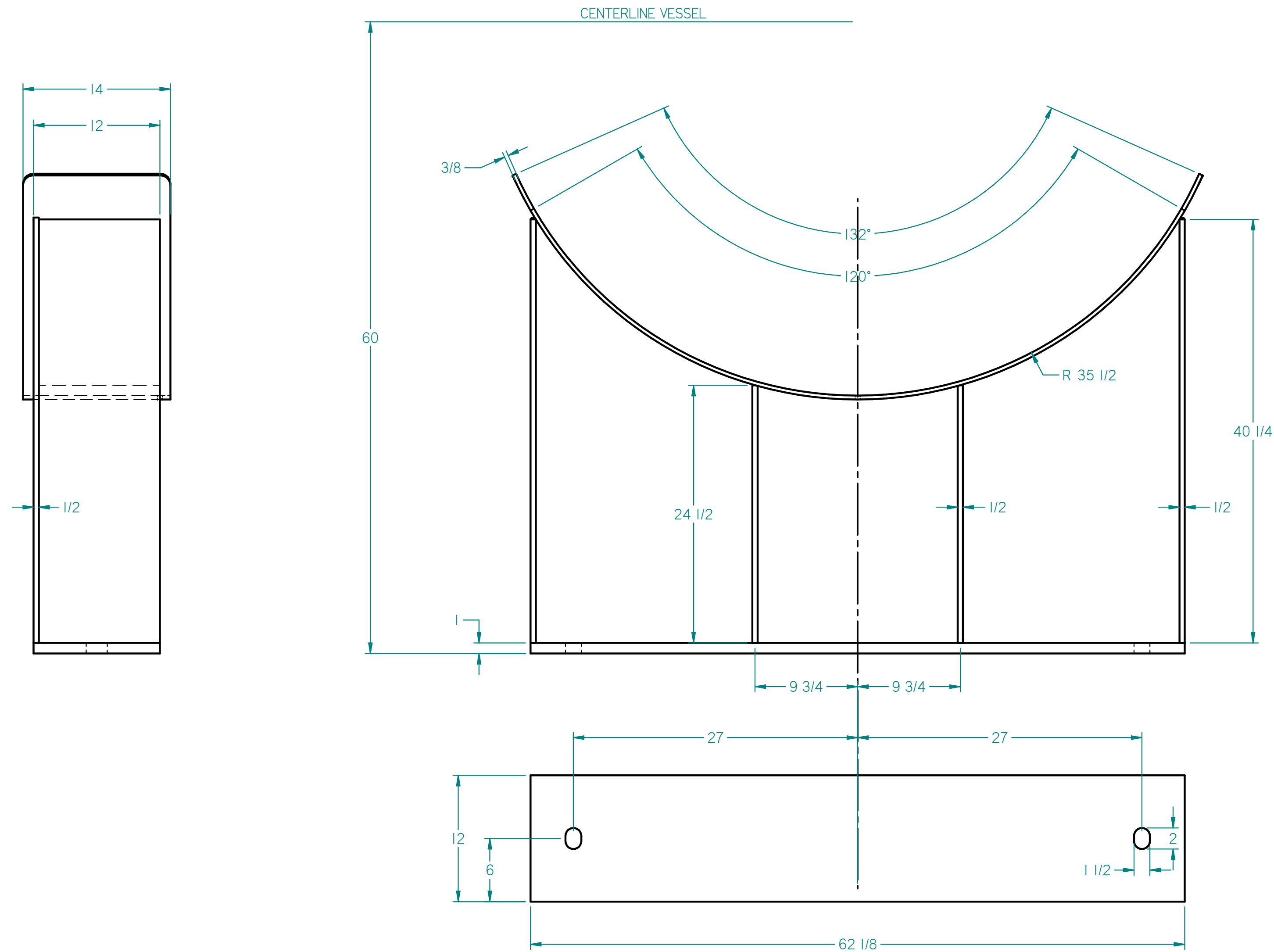
YEAR BUILT	2011	TAG/MODEL NUMBER	70102
SERIAL NO.	LATER	NATIONAL BD. NO.	3628
DESIGN PRESSURE INTERNAL	1440	PSIG @ TEMP.	-20/125 °F MIN/MAX
DESIGN PRESSURE EXTERNAL	-	PSIG @ TEMP.	- °F MIN/MAX
HYDRO PRESSURE INTERNAL	1873	J.E. LONG SEAMS	100% FULL
CORROSION ALLOWANCE	0.00"	J.E. ROUND SEAMS	100% FULL
RADIOGRAPHY	RT-1	STRESS RELIEVE	YES UCS-56
FLANGE RATING	0600	COUPLING RATING	6000
SHELL MATL. SPEC.	SA516-70N	HEAD MATL. SPEC.	SA516-70N
FLANGE MATL. SPEC.	SA105SA350-LF2C1	COUPL. MATL. SPEC.	SA105
PIPE MATL. SPEC.	SA106-B	BW FIT. MATL. SPEC.	SA234-WPB
REPAD MATL. SPEC.	-	STRUC. MATL. SPEC.	SA36
RF GSK. MATL. SPEC.	304SS	FLG. STUD. SPEC.	SA193-B7
RJ GSK. MATL. SPEC.	-	FLG. NUT SPEC.	SA194-2H
EMPTY WEIGHT	75,367 lbs.	FULL LIQUID WEIGHT	126,134 lbs.
RF GSK. DESC.	1/8" SPIRAL WOUND METAL/COMP.		
RJ GSK. DESC.	-		
WELD PROCEDURE	34.35		
INSULATION DESC.	NONE		
INSPECTION BY	ONE BEACON		
CONSTRUCTION CODE	ASME SEC. VIII 2007 ed/2009 Add.		
EXT. SURFACE TREATMENT	WHITE BLAST ONE COAT INORGANIC ZINC		
INT. SURFACE TREATMENT	CLEAN FREE FROM OIL SLAG GRIT ETC.		

NOTE:  
SEE PAGE 2 OF 2 FOR  
INTERNAL AND MISC.  
DETAILS

SCHEDULE OF OPENINGS															
MARK	QT.	SERVICE	SIZE	RATING	TYPE	BORE	WALL	LENGTH	MATERIAL	O.S. PROJ.	I.S. PROJ.	WELD DET.	WELD DET.	SIZE (A)	SIZE (B)
C3	2	PROCESS	0.75	6000	COUPLET	1.050	-	-	SA-105	-	-	VI	-	0.3750	-
C2	2	PROCESS	1.00	6000	COUPLET	1.315	-	-	SA-105	-	-	VI	-	0.3750	-
C1	2	PROCESS	1.00	6000	COUPLET	1.315	-	-	SA-105	-	-	VI	-	0.3750	-
N7	1	DRAIN	2.00	0600	RFLN	2.000	0.655	13.000	SA-105	10.00	FLUSH	V	-	0.3750	-
N6	1	DRAIN	2.00	0600	RFLN	2.000	0.655	13.000	SA-105	10.00	FLUSH	V	-	0.3750	-
N5	1	PSV	2.00	0600	RFLN	2.000	0.655	13.000	SA-105	10.00	FLUSH	V	-	0.3750	-
N4A/B	2	LEVEL BRIDLE	2.00	0600	PIPE/RFWN	1.687	0.344	-	SA-106 B/SA-105	10.00	FLUSH	III	V	0.3750	-
N3	1	DRAIN	4.00	0600	RFHB	4.00	1.428	14.000	SA-105	10.00	FLUSH	V	-	0.3750	-
N2	1	OUTLET	10.00	0600	RFHB	10.000	2.533	14.000	SA-350 LF2/C1	10.00	REM.	IV	-	0.3750	MIN.
N1	1	INLET	8.00	0600	RFHB	8.00	1.973	14.000	SA-350 LF2/C1	10.00	REM.	IV	-	0.3750	MIN.
MW	1	MANWAY w/ DAVIT	24.00	0600	FORG/RFWN	22.062	3.469/0.969	14.500	SA-350 LF2/C1/SA105	16.00	3.000	III	IV	0.3750	0.3750

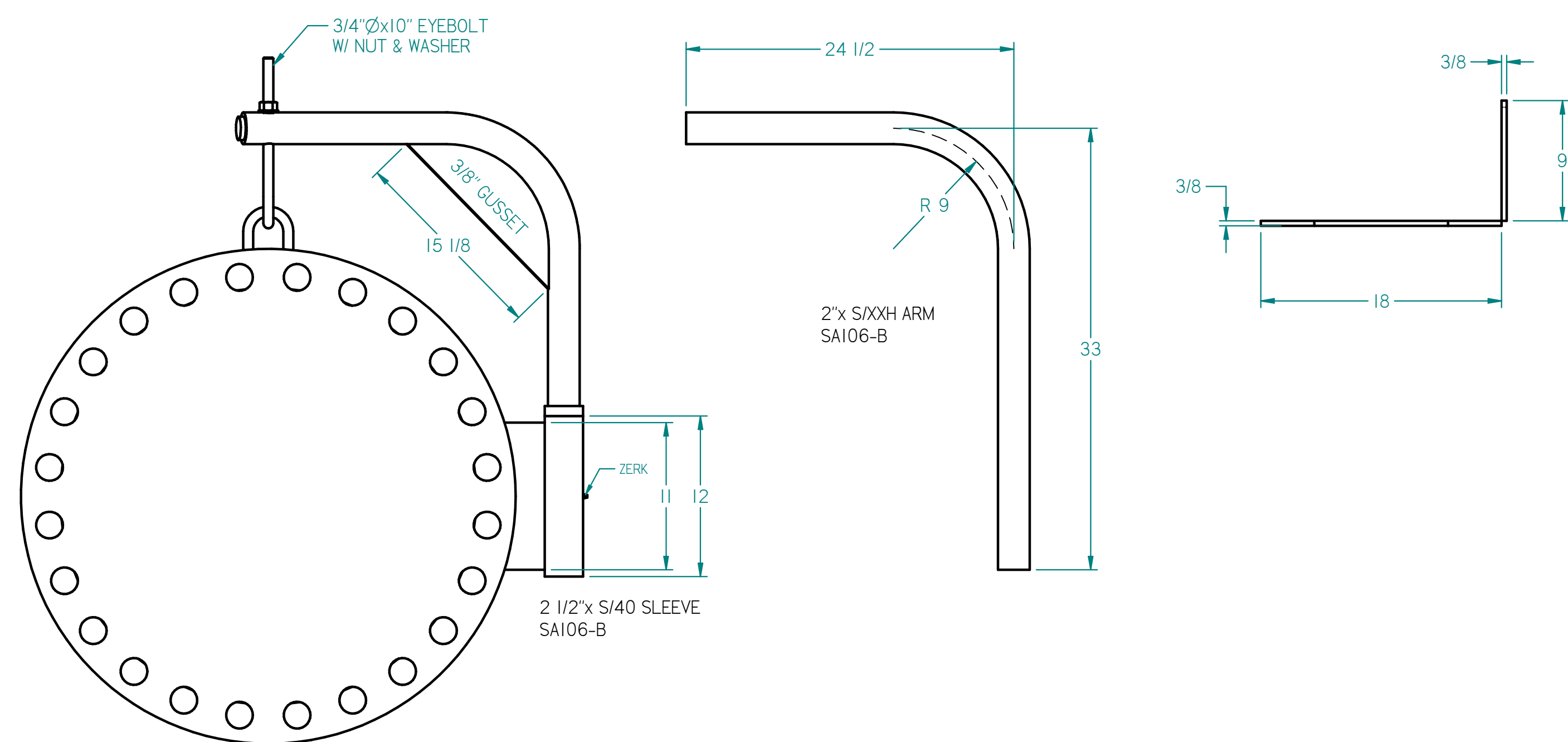
REVISIONS			
NO.	DESCRIPTION	DATE	BY
0	ISSUE FOR ELEVATION AND ORIENTATION	01/16/11	JEM
1	PER MARK-UP DATED 01/31/2011	02/09/11	JEM

DESCRIPTION		SLUG CATCHER	
66" ID x 32'-0" SM/SM (14399-E006)		CUSTOMER	
SCALE	1" = 1'-0"	P.O. NO.	117378
DRAWN	JEM	JOB NO.	
CHECK	JEM	DWG. NO.	
SHEET	1 of 2	11004-01-00	REV. 1

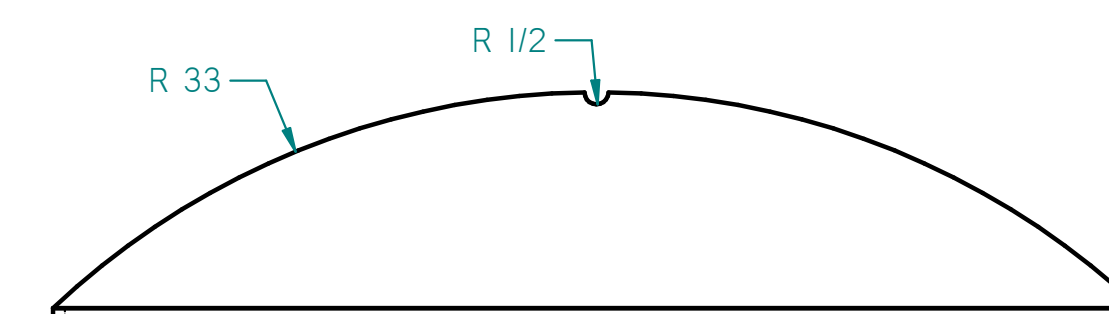


N3 VORTEX BREAKER

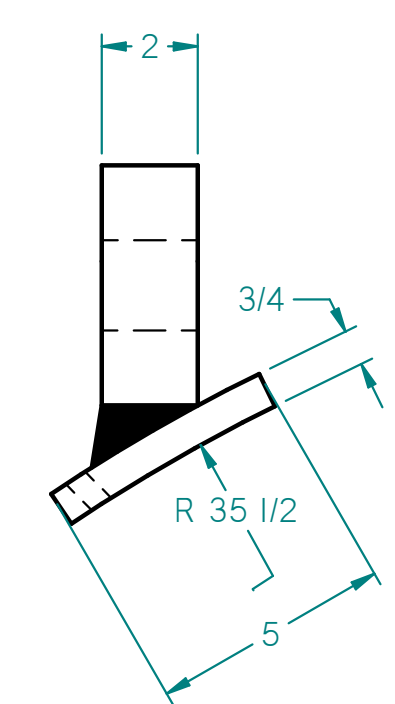
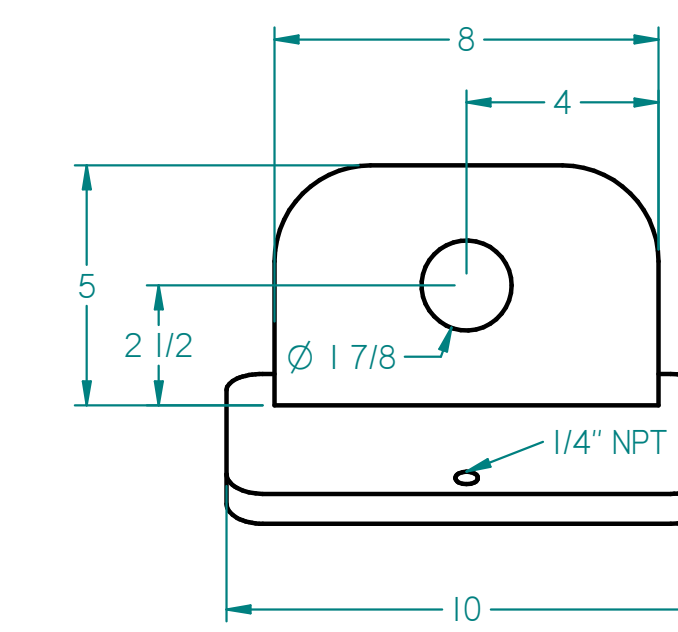
N6, N7 VORTEX BREAKER



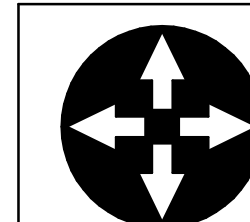
DAVIT ASSY.



NI, N2 DEFLECTOR



LIFT LUG DETAIL



**PRESSURE  
PRODUCTS, INC.**

15920 US HWY. 377 SOUTH, FORT WORTH, TEXAS 76126  
(817) 249-1335  
www.pptix.com

SLUG CATCHER  
INTERNALS AND MISC. DETAILS

REVISIONS			
NO.	DESCRIPTION	DATE	BY
0	ISSUE FOR ELEVATION AND ORIENTATION	01/16/11	JEM
1	PER MARK-UP DATED 01/31/2011	02/09/11	JEM

SCALE	P.O. NO. 117378
DRAWN	JOB NO.
CHECK	DWG. NO.
SHEET 2 of 2	11004-01-00
REV.	1